

JUICE EXTRACTOR #68



Miracle Edition 68

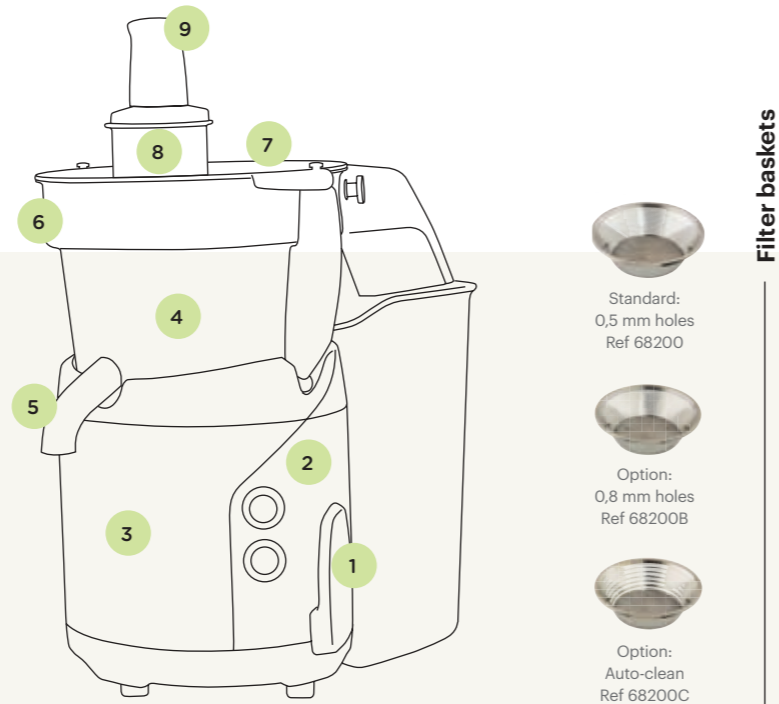
Powerful, heavy duty and easy to clean, this new generation juice extractor #68 is the must-have appliance for juice bars.

Adapted to intensive use, it quickly makes all kinds of fruit and vegetable juices : apple, carrot, ginger, beetroot, cucumber...

Designed to last, it has received the Longtime Label attesting its sturdiness and durability!



140l/h



- 1 Locking system:** Locking-unlocking patented system. Electric cut-off and motor breaking when opening the handle
- 2 Commercial asynchronous motor:** Extremely silent and powerful
- 3 Stainless steel and aluminium body**
- 4 Ezy-Clean™ system:** Removable bowl, basket and cover. 100% stainless steel food zone
- 5 High spout:** 228 mm. Accepts glasses, jugs and blender jars
- 6 Stainless steel filter basket.** Perfect filtration thanks to its very fine sieve (0.5mm / 0.02" holes).
- 7 Stainless steel cover**
- 8 Extra wide feeding chute** Ø 79,5mm (3")
- 9 Pusher :** Low effort, constant flow

Worldwide leader in commercial juicers

Santos has a 35 years' experience in manufacturing commercial juicers and developing exclusive patented systems to provide the best reliability and efficiency.



1986 — 2001 — 2006 — 2013 →



Perfect filtration for high quality juices

Reliability, sturdiness, performance

Powerful and quiet **asynchronous motor**. Full **stainless steel** food zone. **Large basket:** reducing cleaning needs. **XL feeding chute:** fits whole apples. **High output 140l/h:** adapted to intensive use. **Ezy-clean™ system:** removable bowl, basket and cover.



Chefs and patisserie kit #68 110

Filter basket with 0.8 mm holes for fibrous fruits, coulis and thick juices. **Wide feed tray** to place fragile fruits or pour liquid preparations.

Juice bar version #68J

Delivered with a **pulp tube**, which goes directly through your counter to the waste collector below.



Pulp tube Ref 68960

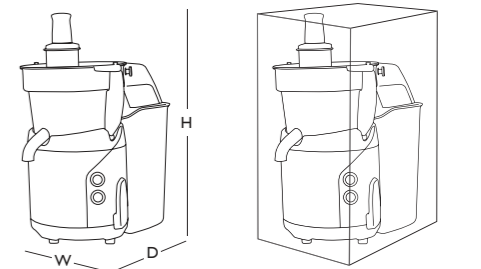
Safety, Standards, Hygiene

In accordance with the following regulations	Machinery directive 2006/42/EC
	Electromagnetic compatibility 2014/30/EU
	"Low voltage" directive 2014/35/EU
	RoHS directive 2011/65/EU
	Regulation 1935/2004/EC (contact with food)
Harmonized European Standards	Regulation 10/2011/EU (Plastic in contact with food)
	EN ISO 12100: 2010
	EN 60204-1 + A1: 2009
	EN 60335-2-64: 2015 Commercial electric kitchen machines
	EN 12547: 2014 Juice extractors
Electrical safety	CE Marking, UL (USA) and cUL (Canada), NSF (USA), KC (Korea)
	On/Off switch detects overloading and no voltage
	All mechanical parts are ground connected
Thermal safety	Appliances are 100% tested after assembly
	Motor protected by internal thermal detector and overload protector
Acoustic safety	Silent asynchronous motor
Mecanical safety	A friction brake immediately stops the basket when opening the handle
Hygiene	All removable parts can be put in a dishwasher or easily cleaned with hot soapy water

Technical specifications

Motor
Single phase:
220-240 V - 50 / 60 Hz - 1300W CE, KC, GS
100-120V - 50/60Hz - 1300W CE, NSF, UL

Speed:
3000 rpm (50Hz)
3600 rpm (60Hz)

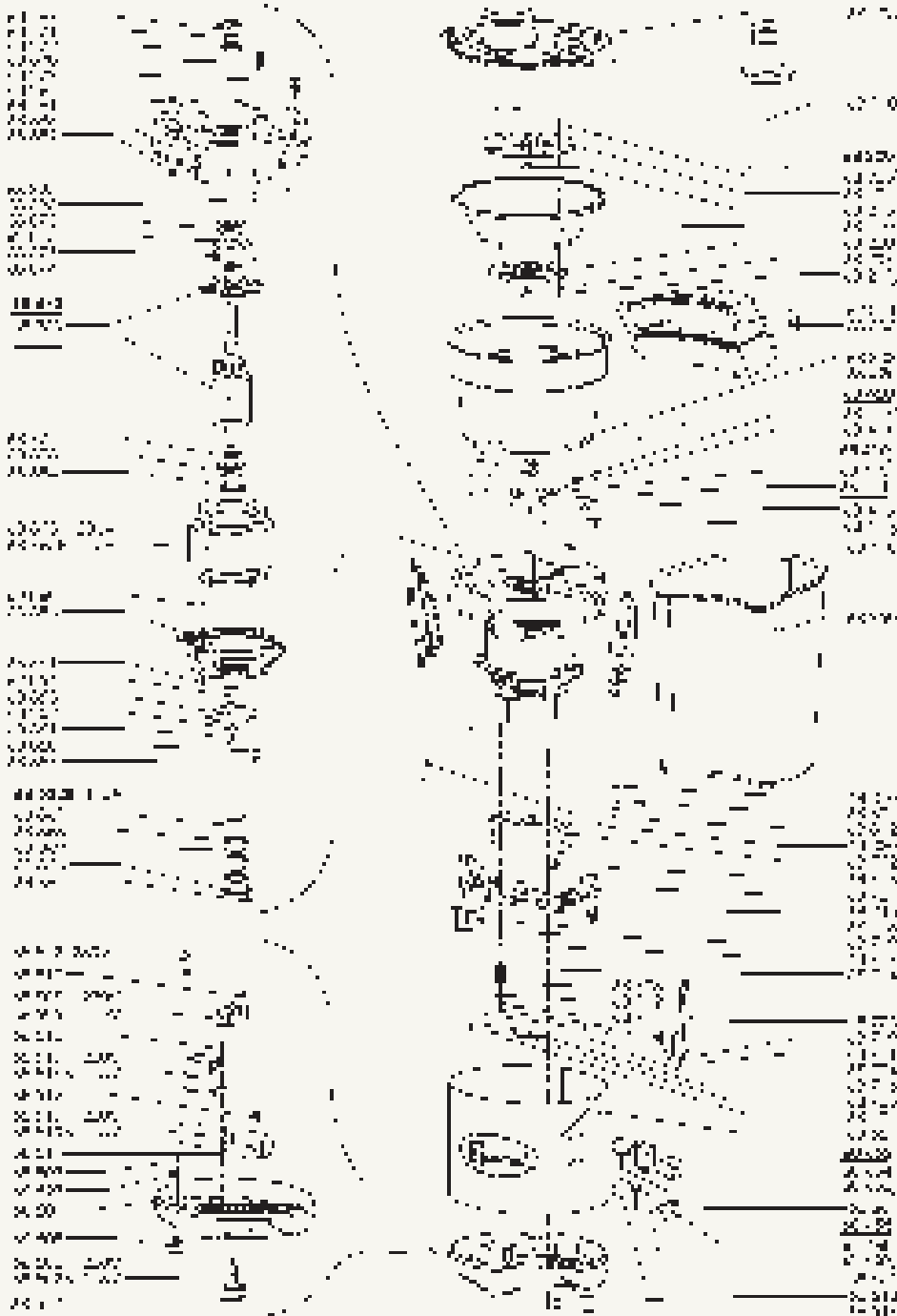


Appliance W: 320 mm (12,6") D: 480 mm (19") H: 580 mm (23")	Shipping box W: 370 mm (14,6") D: 660 mm (26") H: 590 mm (23,2")
Net weight: 26 Kg (57lbs)	Packed weight: 28,8 Kg (63lbs)

PRODUCT: 2-YEAR WARRANTY
MOTOR: 5-YEARS



Food and Beverage
Solutions Provider



SANTOS
140-150 avenue Roger Salengro
BP 80 067
69511 Vaulx-en-Velin Cedex (Lyon) FRANCE

Tel: +33 472 37 35 29
Fax: +33 478 26 58 21
Email: santos@santos.fr
www.santos.fr

Follow us on **#santosaddict**
social networks

